

## 2025 consultation

|                        |                 |
|------------------------|-----------------|
| <b>Submission type</b> | Upload          |
| <b>Submitter</b>       | Shorebird Group |
| <b>Response ID</b>     | 269613          |

### Disclaimer

This document is a submission to the Net Zero Commission’s 2025 consultation. As part of the consultation process, the commission has committed to publishing the submissions it receives. Submissions do not represent the views of the commission.



# Turning Coal Mine Waste into Agricultural Gold

A sustainable solution for New South Wales' mining legacy and agricultural future. Our innovative technology transforms environmental challenges into economic opportunities.

# The Challenge & Opportunity

## Current Challenges

- 500 million tonnes of coal mine tailings require remediation
- Agricultural land degradation across NSW needs 540 million tonnes of recarbonation of top soil
- \$5 billion spent on imported synthetic fertilizers
- Rural economic decline in mining regions

## Our Solution

- Convert mining waste into valuable soil conditioner
- Revitalize regional economies with new jobs
- Create sovereign supply chain for agriculture
- Deliver significant environmental benefits



# Investment & Job Creation

**\$40M**

**Total Investment**

Initial capital to establish operations across NSW

**80**

**Direct Jobs**

30 operational staff + 50 head office roles

**100+**

**Logistics Jobs**

Transportation and distribution network

**250+**

**Indirect Jobs**

Supporting businesses and services





# Our Ready Partners



## 3 Coal Mining Companies

Committed to providing waste materials and plant sites



## Multiple Local Councils

Ready to facilitate operations and provide regulatory support



## Agricultural Partners

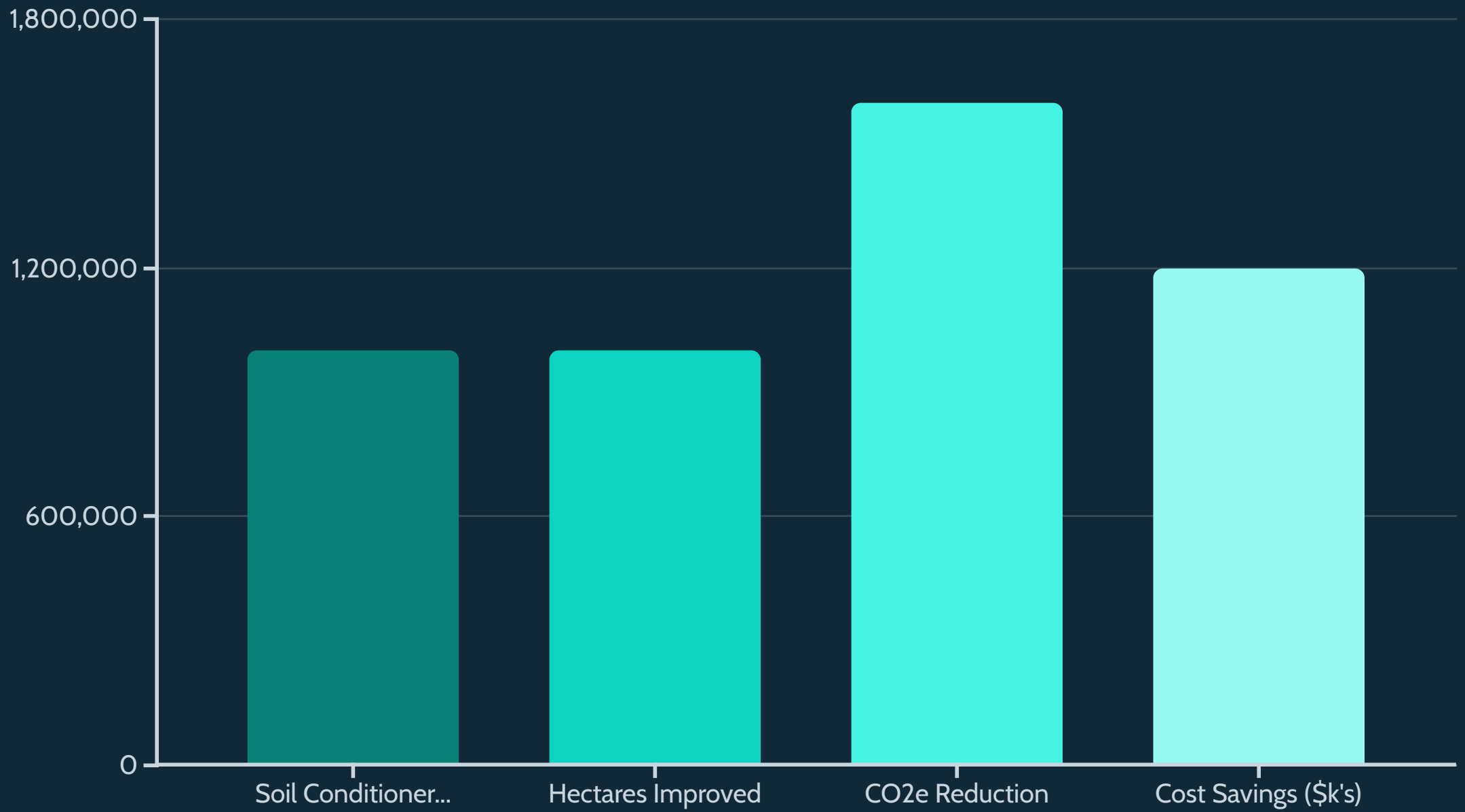
Eager to implement soil conditioner across NSW farmland



## Logistics Networks

Prepared to transport materials efficiently throughout the state

# Agricultural Impact (Millions)



Our technology delivers transformative agricultural benefits across one million hectares of NSW farmland annually.

# Soil Health Benefits

## Increased Soil Organic Carbon

Improves soil structure and water retention

## Increased Crop Yields

Enhances productivity and farmer profitability



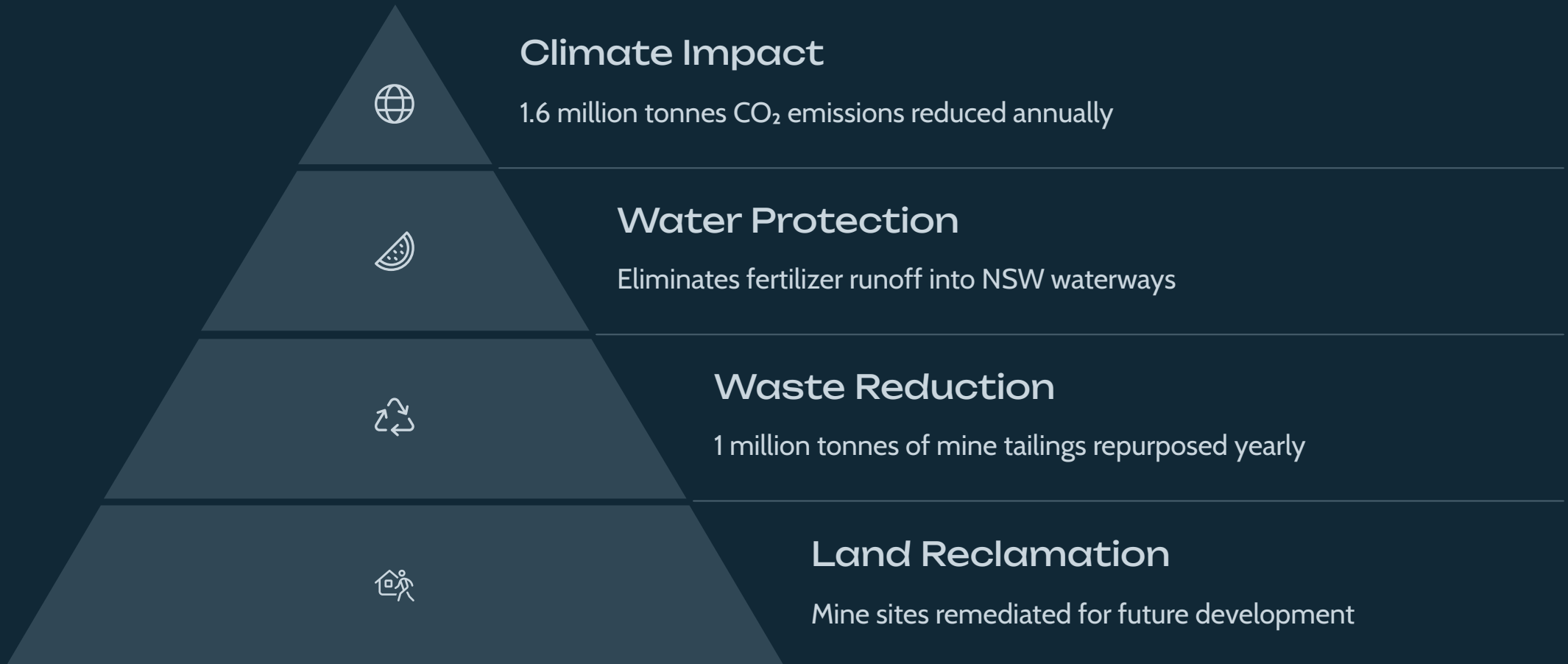
## Enhanced Water Efficiency

Reduces drought vulnerability and irrigation needs

## Improved Microbial Activity

Boosts nutrient cycling and plant health

# Environmental Benefits







# Carbon Emission Reduction Equivalents



**347,800 Cars**

Annual emissions from  
passenger vehicles  
removed from roads



**210,500  
Homes**

Yearly household  
electricity usage offset



**26.5 Million  
Trees**

Carbon sequestration  
equivalent in forest  
plantings

Our annual 1.6 million tonne CO<sub>2</sub> reduction represents significant progress toward NSW climate goals.



# FOGO Waste Opportunity

## Current NSW FOGO Challenge

- Over 900,000 tonnes of national residential FOGO waste generated annually
- We can divert 100,000 tonnes to our facilities

## Economic Opportunity

- \$350 per tonne value from diverted FOGO
- \$35 million potential annual savings
- Complementary input for our soil conditioner

## Integration Benefits

- Enhanced soil conditioner quality
- Reduced methane emissions from landfills
- Complete circular economy solution

# Economic Impact



**\$500M Annual Revenue**

Direct business revenue from operations



**\$750M Economic Activity**

Additional economic activity generated



**Regional Business Growth**

Support for local businesses and services



**Housing Pressure Relief**

Residents remain in regional communities



# Workforce Transformation

## Skills Assessment

Identify transferable skills from mining sector workers. Build personalized development plans for career transition.

## Specialized Training

Partner with TAFE NSW for targeted green technology programs. Provide hands-on experience with our proprietary technology.

## New Career Pathways

Create jobs across operations, logistics, and administration. Establish advancement opportunities within green industries.



# The Investment Opportunity



## \$40M Government Grant

Seed funding to establish initial operations



## Two Processing Plants

Strategically located facilities in mining regions on existing sites



## Rapid Scale-Up

Self Sustaining expansion capability to address more waste tonnage



## Long-Term Partnership

Creating sustainable jobs and environmental benefits

Join us in transforming NSW's environmental challenges into economic opportunities. A smart investment in our state's future.

